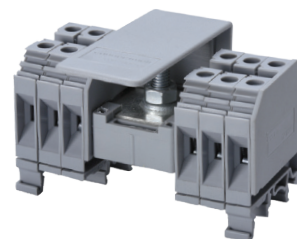
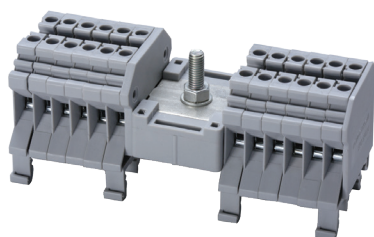
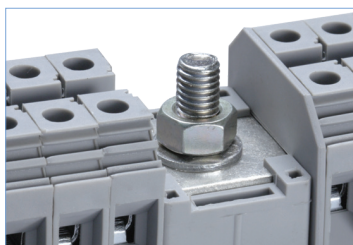


Techna TERMINALS

Distribution Blocks

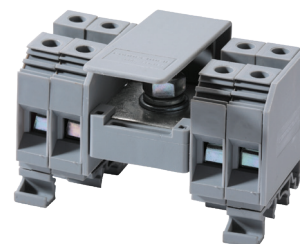
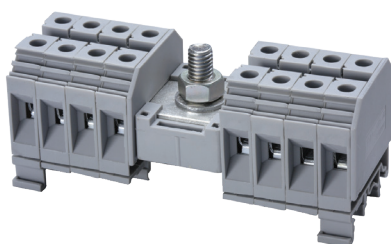
Ttec CDB Distribution Blocks are an ideal choice for a simplified distribution system. A bolt in the centre of the block provides a connection point for the incoming cable. All the terminals are internally connected and provide multiple connection points for the outgoing wires. A protective shield effectively shrouds the incoming connection. These Distribution Blocks are available in Red, Yellow, Blue, Black & Green.

NOTE: Sum of outgoing currents on either side of the centre should not exceed half the maximum permissible incoming current. Sum of total outgoing currents should not exceed maximum permissible incoming current. Connection for higher outgoing currents should be done through the terminal nearest to the incoming connection.



Model	Ttec CDB4			Ttec CDB6		
Length	43 mm			48 mm		
Height with DIN-Rail: 35 x 7.5 / 35 x 15 / 32 mm	46.2 mm / 53.7 mm / 51.1 mm			47.8 mm / 55.5 mm / 52.8 mm		
Wire Size at Input	16 mm ² / 8 AWG			25 mm ² / 2 AWG		
Connection Possibility as per	IEC		UL - CSA	IEC		UL - CSA
Stranded Wire	0.2 - 4 mm ²		22 - 10 AWG	1.5 - 6 mm ²		22 - 8 AWG
Solid Wire	0.2 - 6 mm ²		–	1.5 - 10 mm ²		–
Wire Stripping Length	8 mm			9 mm		
Ratings as per	IEC60947-7-1	UL-1059	CSA22.2-158	IEC60947-7-1	UL-1059	CSA22.2-158
Voltage	800 V	600 V	600 V	800 V	600 V	600 V
Current Input / Total Output*	64 A / 32 A	50 A / 35 A	50 A / 35 A	82 A / 41 A	100 A / 50 A	100 A / 50 A
Torque Input / Output	2 Nm / 0.5 Nm	26 lb-in / 7 lb-in	26 lb-in / 7 lb-in	3 Nm / 0.8 Nm	35 lb-in / 14 lb-in	35 lb-in / 14 lb-in
Certification						
Rated Impulse Voltage/ Pollution Degree	8 KV/3			8 KV/3		

*On either side of Input.

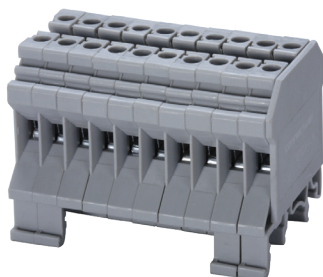
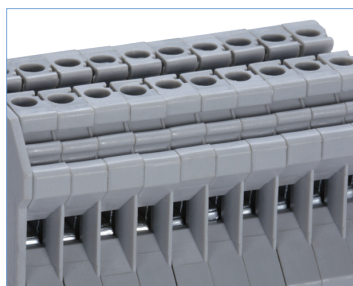


Model	Ttec CDB10			Ttec CDB25		
Length	48 mm			49 mm		
Height with DIN-Rail: 35 x 7.5 / 35 x 15 / 32 mm	47.8 mm / 55.5 mm / 52.8 mm			57.2 mm / 64.7 mm / 62.3 mm		
Wire Size at Input	35 mm ² / 1/0 AWG			50 mm ² / 2/0 AWG		
Connection Possibility as per	IEC		UL - CSA	IEC		UL - CSA
Stranded Wire	1.5 - 10 mm ²		16 - 1/0 AWG	6 - 25 mm ²		12 - 2/0 AWG
Wire Stripping Length	11 mm			14 mm		
Ratings as per	IEC60947-7-1	UL-1059	CSA22.2-158	IEC60947-7-1	UL-1059	CSA22.2-158
Voltage	800 V	600 V	600 V	800 V	600 V	600 V
Current Input / Total Output*	114 A / 57 A	130 A / 65 A	130 A / 65 A	150 A / 75 A	150 A / 75 A	100 A / 50 A
Torque Input / Output	6 Nm / 1.2 Nm	53 lb-in / 14 lb-in	53 lb-in / 14 lb-in	6 Nm / 2 Nm	53 lb-in / 14 lb-in	53 lb-in / 14 lb-in
Certification						
Rated Impulse Voltage/ Pollution Degree	8 KV/3			8 KV/3		

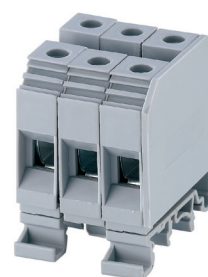
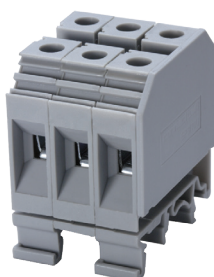
*On either side of Input.

Distribution Blocks

Ttec CMDB Distribution Blocks are a modified version of the Ttec CDB Distribution Blocks without the central incoming terminal connection. The Ttec CMDB Distribution Blocks are also available in Red, Yellow, Blue, Black & Green.



Model	Ttec CMDB4		Ttec CMDB6	
Length	43 mm		48 mm	
Height with DIN-Rail: 35 x 7.5 / 35 x 15 / 32 mm	46.2 mm / 53.7 mm / 51.1 mm		47.8 mm / 55.5 mm / 52.8 mm	
Connection Possibility as per	IEC	UL - CSA	IEC	UL - CSA
Stranded Wire	0.2 - 4 mm ²	22 - 10 AWG	1.5 - 6 mm ²	22 - 8 AWG
Solid Wire	0.2 - 6 mm ²	–	–	–
Wire Stripping Length	8 mm		9 mm	
Ratings as per	IEC60947-7-1	UL-1059	IEC60947-7-1	UL-1059
Voltage	1000 V	600 V	1000 V	600 V
Current	32 A	35 A	41 Nm	50 A
Torque	0.5 Nm	7 lb-in	0.8 Nm	14 lb-in
Certification				
Rated Impulse Voltage/ Pollution Degree	8 KV/3		8 KV/3	



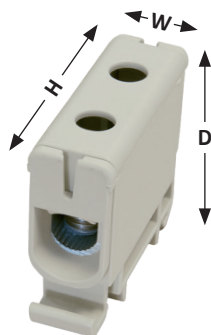
Model	Ttec CMDB10		Ttec CMDB25		
Length	48 mm		49 mm		
Height with DIN-Rail: 35 x 7.5 / 35 x 15 / 32 mm	47.8 mm / 55.5 mm / 52.8 mm		57.2 mm / 64.7 mm / 62.3 mm		
Connection Possibility as per	IEC	UL - CSA	IEC	UL - CSA	
Stranded Wire	1.5 - 10 mm ²	22 - 6 AWG	6 - 25 mm ²	12 - 4 AWG	
Solid Wire	–	–	–	–	
Wire Stripping Length	11 mm		14 mm		
Ratings as per	IEC60947-7-1	UL-1059	IEC60947-7-1	UL-1059	CSA22.2-158
Voltage	1000 V	600 V	800 V	600 V	600 V
Current	57 A	65 A	101 A	85 A	85 A
Torque	1.2 Nm	14 lb-in	2 Nm	22 lb-in	22 lb-in
Certification					
Rated Impulse Voltage/ Pollution Degree	8 KV/3		8 KV/3		


Distribution Blocks (Up to 425A)

The Ttec DB Series Distribution Blocks are ideal as a panel input to feed power into a cabinet with convenient lug free termination.


Ttec DB Distribution Blocks are ideal for high current applications and provides an easy to install solution.

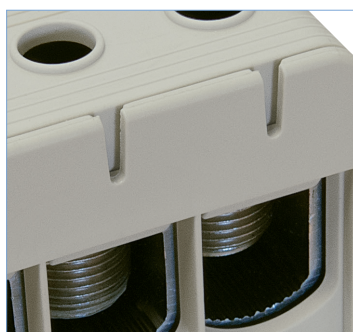
Yellow/Green (Earth) and Blue (Neutral) versions are also available in variants with two connection points only.




Model	Ttec DB50		
Connection Points (Common)	2	4	6
Width	18 mm	30 mm	42 mm
H x D	50 x 44 mm		
Connections - Solid/Stranded Cu	2.5 - 50 mm ²		
Torque Rating	4 Nm (2.5 - 6 mm ²) / 12 Nm (10 - 50 mm ²)		
Insulation Voltage (U _i)	690 V		
Rated Current	160 A		
Certification	CE 		
Rated Impulse Voltage/ Pollution Degree	8 KV/3		




Model	Ttec DB95		
Connection Points (Common)	2	4	6
Width	24 mm	42 mm	60 mm
H x D	60 x 50 mm		
Base Height	88 mm		
Connections - Solid/Stranded Cu	16 - 95 mm ²		
Torque Rating	20 Nm		
Insulation Voltage (U _i)	690 V		
Rated Current	245 A		
Certification	CE 		
Rated Impulse Voltage/ Pollution Degree	8 KV/3		

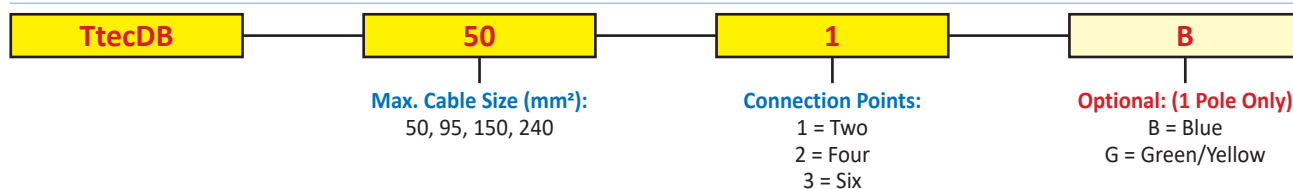


Model	Ttec DB150		
Connection Points (Common)	2	4	6
Width	29 mm	51 mm	73 mm
H x D	72 x 60 mm		
Base Height	95 mm		
Connections - Solid/Stranded Cu	35 - 150 mm ²		
Torque Rating	30 Nm		
Insulation Voltage (U _i)	690 V		
Rated Current	320 A		
Certification	CE 		
Rated Impulse Voltage/ Pollution Degree	8 kV/3		



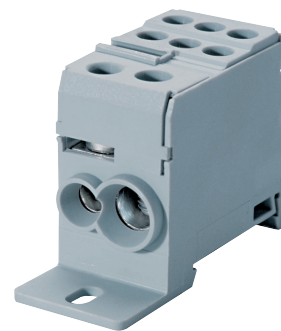
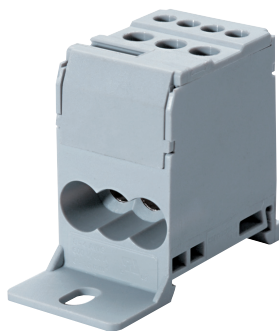
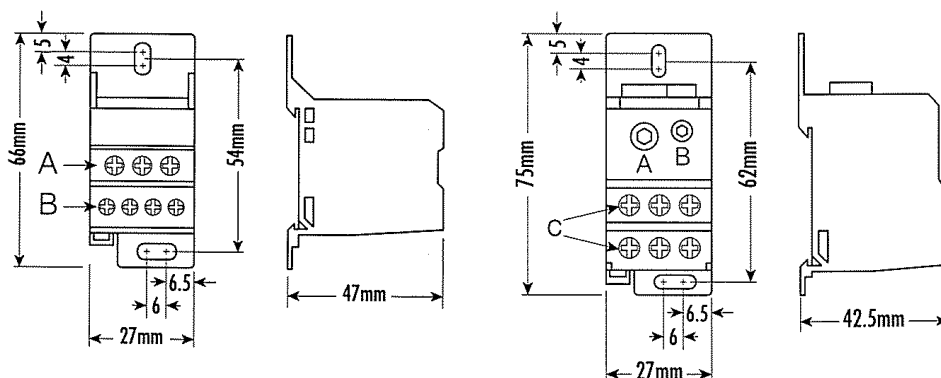
Model	Ttec DB240		
Connection Points (Common)	2	4	6
Width	38 mm	65 mm	94 mm
H x D	98 x 68 mm		
Base Height	130 mm		
Connections - Solid/Stranded Cu	35 - 240 mm ²		
Torque Rating	40 Nm		
Insulation Voltage (U _i)	690 V		
Rated Current	425 A		
Certification	CE 		
Rated Impulse Voltage/ Pollution Degree	8 kV/3		

Ttec DB Ordering Scheme

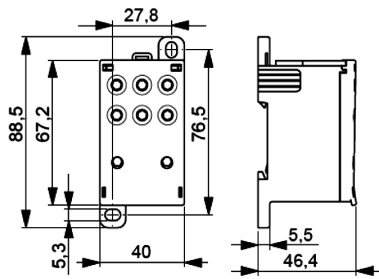


Compact Distribution Blocks (Up to 500A)

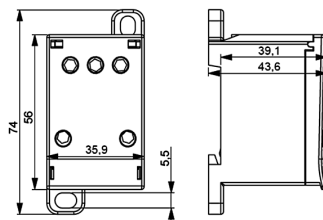
The Ttec DB Series Compact Distribution Blocks are used for single phase distribution systems. These Distribution Blocks can either be mounted on DIN-Rail or can be panel mounted. The Ttec DB Series Distribution Blocks are completely shrouded and offer IP20 protection.



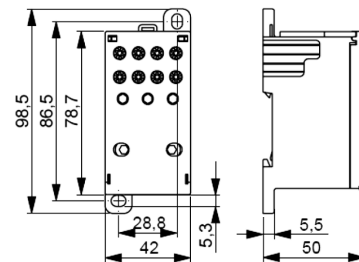
Model		Ttec DB16			Ttec DB35	
Width (Thickness) x Length		27 x 66 mm			27 x 75 mm	
Height with DIN-Rail: 35 x 7.5 mm / 35 x 15 mm		50.8 mm / 57.8 mm			50.8 mm / 57.8 mm	
Connection Possibility as per		IEC		UL - CSA		
At Connection Point A in diagram	Wire Range	6 - 16 mm ²	8 - 4 AWG	6 - 35 mm ²	8 - 2 AWG	
	Stripping Length	15 mm	15 mm	15 mm	15 mm	
	Torque	1.2 Nm	14 lb-in	4.5 Nm	40 lb-in	
At Connection Point B in diagram	Wire Range	2.5 - 6 mm ²	14 - 10 AWG	6 - 16 mm ²	8 - 4 AWG	
	Stripping Length	9 mm	9 mm	15 mm	15 mm	
	Torque	0.8 Nm	7 lb-in	1.2 Nm	14 lb-in	
At Connection Point C in diagram	Wire Range	-		2.5 - 10 mm ²	14 - 6 AWG	
	Stripping Length	-		10 mm	10 mm	
	Torque	-		2 Nm	17.5 lb-in	
Ratings as per		IEC60947-7-1	UL-1059	CSA22.2-158	IEC60947-7-1	UL-1059
Voltage		1000 V	600 V	600 V	1000 V	600 V
Current		76 A	80 A	80 A	125 A	115 A
Torque		1.2 / 0.8 Nm	14 / 7 lb-in	14 / 7 lb-in	6 / 3 Nm	40 / 17.5 lb-in
Certification						
Rated Impulse Voltage/ Pollution Degree		6 KV/3			6 KV/3	



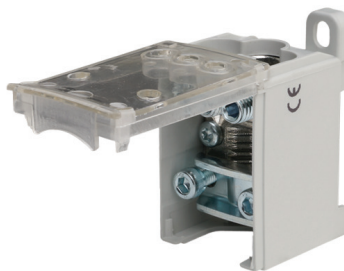
Ttec DB160-6:
160A 6-Way Distribution Block



Ttec DB250-3:
250A 3-Way Distribution Block

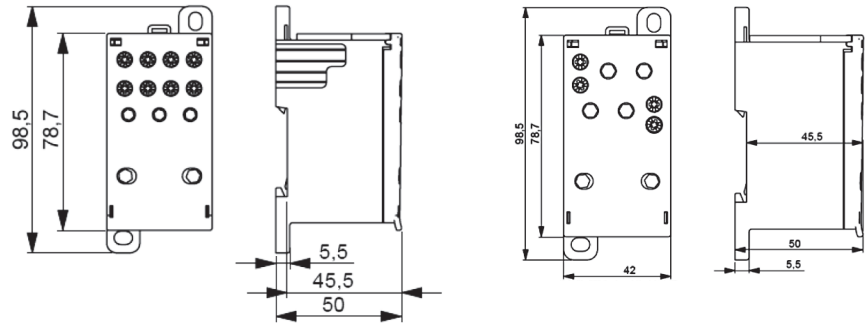


Ttec DB250-3/8:
250A 3-Way + 8-Way Distribution Block



Model	Ttec DB160-6		Ttec DB250-3		Ttec DB250-3/8	
Terminal W x H x D	40 x 69 x 45 mm		36 x 56 x 43 mm		42 x 79 x 50 mm	
	Line	Load	Line	Load	Line	Load
Connections - Solid/ Stranded Cu	1 x 16 - 70 mm ²	6 x 2.5 - 35 mm ²	1 x 25 - 120 mm ²	3 x 2.5 - 35 mm ²	1 x 35 - 150 mm ²	3 x 2.5 - 35 mm ² 8 x 2.5 - 16 mm ²
Screw Size / Torque Rating	M5 / 6 Nm	M8 / 8 Nm	M5 / 6 Nm	M8 / 8 Nm	M5 / 6 Nm	M8 / 8 Nm M5 / 1.5 Nm
Insulation Voltage (U _i)	1000 V		1000 V		1000 V	
Rated Current	160 A		250 A		250 A	
Certification	CE DE		CE DE		CE DE	
Rated Impulse Voltage/ Pollution Degree	8 KV/2		8 KV/2		8 KV/2	

NOTE: TtecDB Terminals (Connection Lugs) are available for these Distribution Blocks (see page 186).



Ttec DB400-3/8:
400A 3-Way + 8-Way Distribution Block

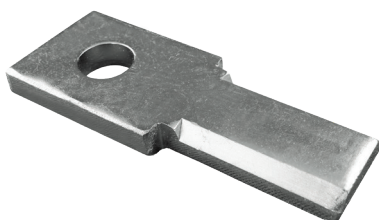
Ttec DB500-4/4:
500A 4-Way + 4-Way Distribution Block



Model	Ttec DB400-3/8		Ttec DB500-4/4	
Terminal W x H x D	42 x 78.7 x 50 mm		42 x 78.7 x 50 mm	
	Line	Load	Line	Load
Connections - Solid/Stranded Cu	1 x 95 - 185 mm ²	3 x 2.5 - 35 mm ² 8 x 2.5 - 16 mm ²	1 x 150 - 240 mm ²	4 x 10 - 70 mm ² 4 x 2.5 - 16 mm ²
Screw Size / Torque Rating	M6 / 10 Nm	M8 / 8 Nm M5 / 1.5 Nm	M6 / 10 Nm	M10x1 / 10 Nm M5 / 1.5 Nm
Insulation Voltage (U _i)	1000 V		1000 V	
Rated Current	400 A		500 A	
Certification	CE		CE	
Rated Impulse Voltage/ Pollution Degree	8 KV/2		8 KV/2	

TtecDB Terminals - Connection Lugs

TtecDB Terminals are M10 tin-plated copper Connection Lugs which are available to fit the following Ttec DB Compact Distribution Blocks:



Fits all of:	Order Code
Ttec DB160-6	TtecDBterminal
Ttec DB250-3	
Ttec DB250-3/8	
Ttec DB400-3/8	
Ttec DB500-4/4	